

WATER TRANSPORT

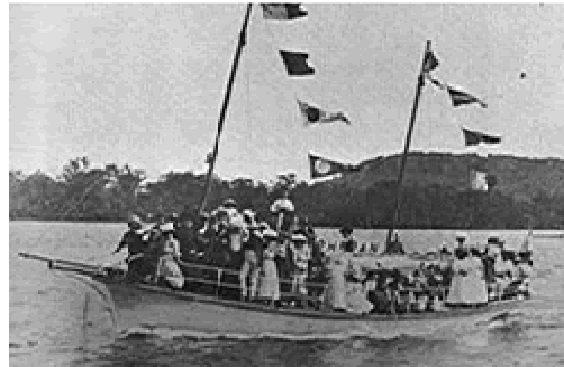
One of the main modes of transport was by boat. Very few roads existed and therefore it was easier to travel via the waterways. In 1910 the Sydney steamers "Woy Woy" and "Erina" called four times a week at Gosford. In this period it was common for 20 launches at one time to be seen conveying passengers from all parts of Brisbane Water to market day in Gosford, particularly in the weather offered no strain to those embarking on the water.



Gosford Wharf, 1910.

"The Handsome new motor launch Merry Days is available for picnic parties and will run monthly excursions from Gosford to Hawkesbury River, Cowan and Newport, completing the round trip to and from Sydney. A series of Moonlight trips will be run from Gosford to Woy Woy during the summer moonlight nights."

- advertisement from W.E.Phegan's, Great Northern Line Tourist Guide of 1910.



In the 1910's, at the Royal Hotel in Mann Street, Gosford, the licensee was Arthur Lewis. In an advertisement he informed the public that "... the schnapper fishing boat "Glenrock" runs in connection with the hotel. All trains and steamers are met. Horses and vehicles for hire. Launch excursions arranged to the Bar, The Rip, Kincumber and other famous beauty spots of Brisbane Water. Phone No.6 Gosford."

The boat mentioned was owned by Fred Couche, waterman and boarding house keeper of Koolewong. Fred Couche used this launch 'Glenrock' for outside fishing excursions, usually on Wednesdays and Sundays (two shillings and sixpence per person, including bait). He was well over 6ft tall with a build and a voice to match. There were many stories concerning his enormous voice. On one occasion his friend and employee Charlie Tonkin disturbed a hive of bees at Koolewong and was pursued by the angry occupants. Fred Couche found the sight so hilarious that people at Woy Woy said they could hear him roaring with laughter across the water. In the photo he is standing on the left.



"Glenrock"

"General Gordon" a stern- wheel paddle steamer was built by Tom Davis at Terrigal in 1886. It carried railway passengers between Hawkesbury River Wharf and Gosford before the Hawkesbury River Railway Bridge, connecting the railway from Sydney to Gosford, was opened in 1889. It was later employed in tourist trips on the Hawkesbury.



" General Gordon"